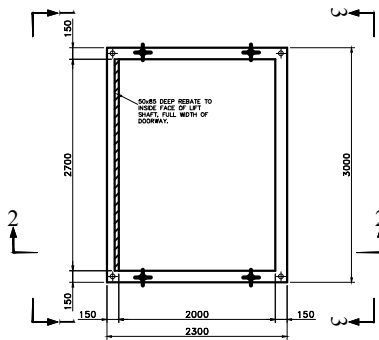
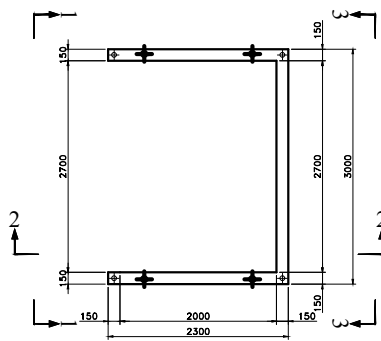


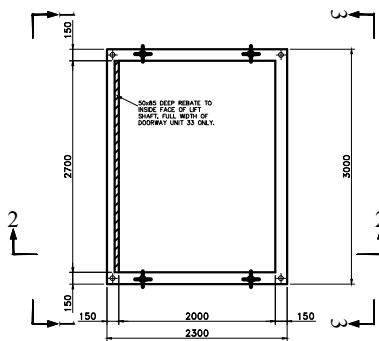
SECTION A-A THROUGH UNIT 31.
SCALE 1:30



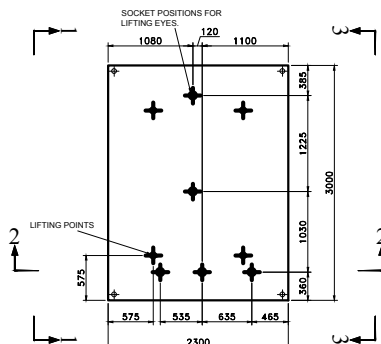
SECTION B-B THROUGH UNITS 31.
SCALE 1:30



SECTION C-C THROUGH UNIT 32.
SCALE 1:30



SECTION D-D THROUGH UNITS 33, 34.
SCALE 1:30



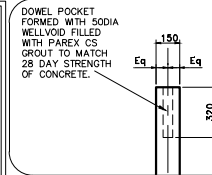
SECTION F-F THROUGH UNIT 35.
SCALE 1:30

LIFT SHAFT SECTIONS TO BE BEDDED ON SHIMS & SF BEDDING MORTAR (BY PAREX). 50 DIA HOLES TO BE GROUTED WITH CS GROUT (BY PAREX IN ACCORDANCE WITH THEIR TECHNICAL DATA).

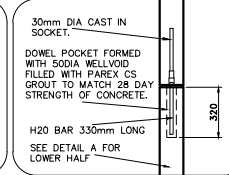
THIS DRAWING TO BE READ IN CONJUNCTION WITH LIFT MANUFACTURERS DRAWINGS.

⊕ INDICATES A LIFTING POINT
⊕ INDICATES TIE DETAILS AT CORNERS.

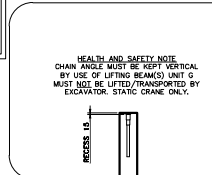
LEVEL OF TOP OF UNITS TO BE CHECKED AFTER EACH UNIT HAS BEEN INSTALLED & PACKS ARE TO BE ADJUSTED TO ACHIEVE THESE LEVELS.



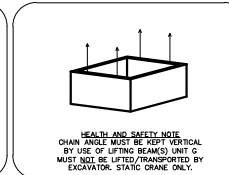
DETAIL A Scale 1:15



DETAIL B Scale 1:15



LIFTING NOTE



LIFTING NOTE

MANUFACTURING TOLERANCE +/-10mm UNITS TO BE INSTALLED PLUMB TO LIFT MANUFACTURES TOLERANCE AND IS TO BE CHECKED AND ADJUSTED AT EACH LEVEL. INTERNAL FACE OF SHAFT TO BE PAINTED WITH 2 COATS OF WHITE PAINT.

- NOTES:
1. DO NOT SCALE FROM THIS DRAWING.
 2. ALL DIMENSIONS ARE IN MILLIMETRES UNLESS OTHERWISE STATED.
 3. THIS DRAWING TO BE READ IN CONJUNCTION WITH ALL OTHERS RELEVANT TO THIS PROJECT.
 4. ALL PREPARATION WORK TO BE INSTALLED IN STRICT COMPLIANCE WITH MANUFACTURERS INSTRUCTIONS AND RECOMMENDATIONS.
 5. REINFORCED CONCRETE: MANUFACTURERS RECOMMENDED COVER CONCRETE (SPACE CLASS 30MM).
 6. CONCRETE FINISHES: FINISH AS FORMED FINISHES.
 7. CHAIN ANGLE TO REMAIN VERTICAL TO BE SHOWN.
 8. MINIMUM HEIGHT OF PRECAST UNITS BASED ON 35 MPA.
 9. FIRE RESISTANCE 1 HOUR.
 10. UNITS WITH REINFORCED UNITS TO BE FILLED WITH PAREX CS GROUT TO MATCH 28 DAY STRENGTH OF CONCRETE.
 11. PRECAST CONCRETE UNITS ARE COVERED BY RELEVANT CODES OF PRACTICE: BS5400-100 AND BS5400-100:PART 1, SPECIFICATION, PERFORMANCE, PRODUCTION AND CONCRETE. BS EN 12424-1:2000. BS EN 12424-2:2000. BS EN 12424-3:2000. BS EN 12424-4:2000. BS EN 12424-5:2000. BS EN 12424-6:2000. BS EN 12424-7:2000. BS EN 12424-8:2000. BS EN 12424-9:2000. BS EN 12424-10:2000. BS EN 12424-11:2000. BS EN 12424-12:2000. BS EN 12424-13:2000. BS EN 12424-14:2000. BS EN 12424-15:2000. BS EN 12424-16:2000. BS EN 12424-17:2000. BS EN 12424-18:2000. BS EN 12424-19:2000. BS EN 12424-20:2000. BS EN 12424-21:2000. BS EN 12424-22:2000. BS EN 12424-23:2000. BS EN 12424-24:2000. BS EN 12424-25:2000. BS EN 12424-26:2000. BS EN 12424-27:2000. BS EN 12424-28:2000. BS EN 12424-29:2000. BS EN 12424-30:2000. BS EN 12424-31:2000. BS EN 12424-32:2000. BS EN 12424-33:2000. BS EN 12424-34:2000. BS EN 12424-35:2000. BS EN 12424-36:2000. BS EN 12424-37:2000. BS EN 12424-38:2000. BS EN 12424-39:2000. BS EN 12424-40:2000. BS EN 12424-41:2000. BS EN 12424-42:2000. BS EN 12424-43:2000. BS EN 12424-44:2000. BS EN 12424-45:2000. BS EN 12424-46:2000. BS EN 12424-47:2000. BS EN 12424-48:2000. BS EN 12424-49:2000. BS EN 12424-50:2000. BS EN 12424-51:2000. BS EN 12424-52:2000. BS EN 12424-53:2000. BS EN 12424-54:2000. BS EN 12424-55:2000. BS EN 12424-56:2000. BS EN 12424-57:2000. BS EN 12424-58:2000. BS EN 12424-59:2000. BS EN 12424-60:2000. BS EN 12424-61:2000. BS EN 12424-62:2000. BS EN 12424-63:2000. BS EN 12424-64:2000. BS EN 12424-65:2000. BS EN 12424-66:2000. BS EN 12424-67:2000. BS EN 12424-68:2000. BS EN 12424-69:2000. BS EN 12424-70:2000. BS EN 12424-71:2000. BS EN 12424-72:2000. BS EN 12424-73:2000. BS EN 12424-74:2000. BS EN 12424-75:2000. BS EN 12424-76:2000. BS EN 12424-77:2000. BS EN 12424-78:2000. BS EN 12424-79:2000. BS EN 12424-80:2000. BS EN 12424-81:2000. BS EN 12424-82:2000. BS EN 12424-83:2000. BS EN 12424-84:2000. BS EN 12424-85:2000. BS EN 12424-86:2000. BS EN 12424-87:2000. BS EN 12424-88:2000. BS EN 12424-89:2000. BS EN 12424-90:2000. BS EN 12424-91:2000. BS EN 12424-92:2000. BS EN 12424-93:2000. BS EN 12424-94:2000. BS EN 12424-95:2000. BS EN 12424-96:2000. BS EN 12424-97:2000. BS EN 12424-98:2000. BS EN 12424-99:2000. BS EN 12424-100:2000.
 12. THE CONTRACTOR IS TO BEHOLD THE DESIGN TEAM OF DISCREPANCIES.

SEE DRAWING 33624 FOR ELEVATIONS

Revision	Description	Date
A	ISSUED FOR APPROVAL	11/06/17

SCHEDULE SUMMARY

REF	NUMBER OFF	APPROX WT (Cm)
UNIT 31	1 No. Required as Drawn	7.09T
UNIT 32	2 No. Required as Drawn	5.92T
UNIT 33	1 No. Required as Drawn	5.16T
UNIT 34	1 No. Required as Drawn	6.42T
UNIT 35	1 No. Required as Drawn	2.59T

Job Title

WHITEHAVEN CAMPUS

LIFT SHAFT GENERAL ARRANGEMENT

Scale 1:30 @ A1 Drawn by: CH

Date 11/06/17 Contract No. 3362

Drg No. WEC-ATL-C-ZZ-DR-Y-33625 Rev. P1



PRE-STRESSED CONCRETE SPECIALISTS
Harbour 44, Sibbald, Cummer, Cay 48A
Tel: 016973 32585 Fax: 016973 32546

LIFT THREE
1 No. REQUIRED
AS DRAWN